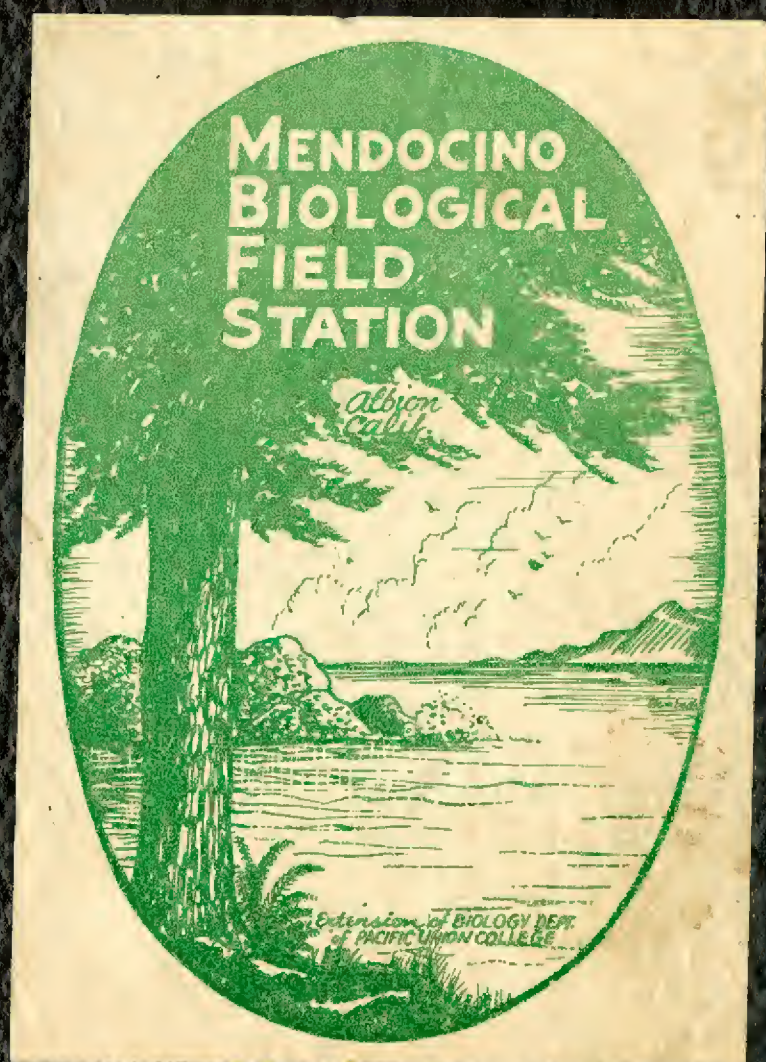
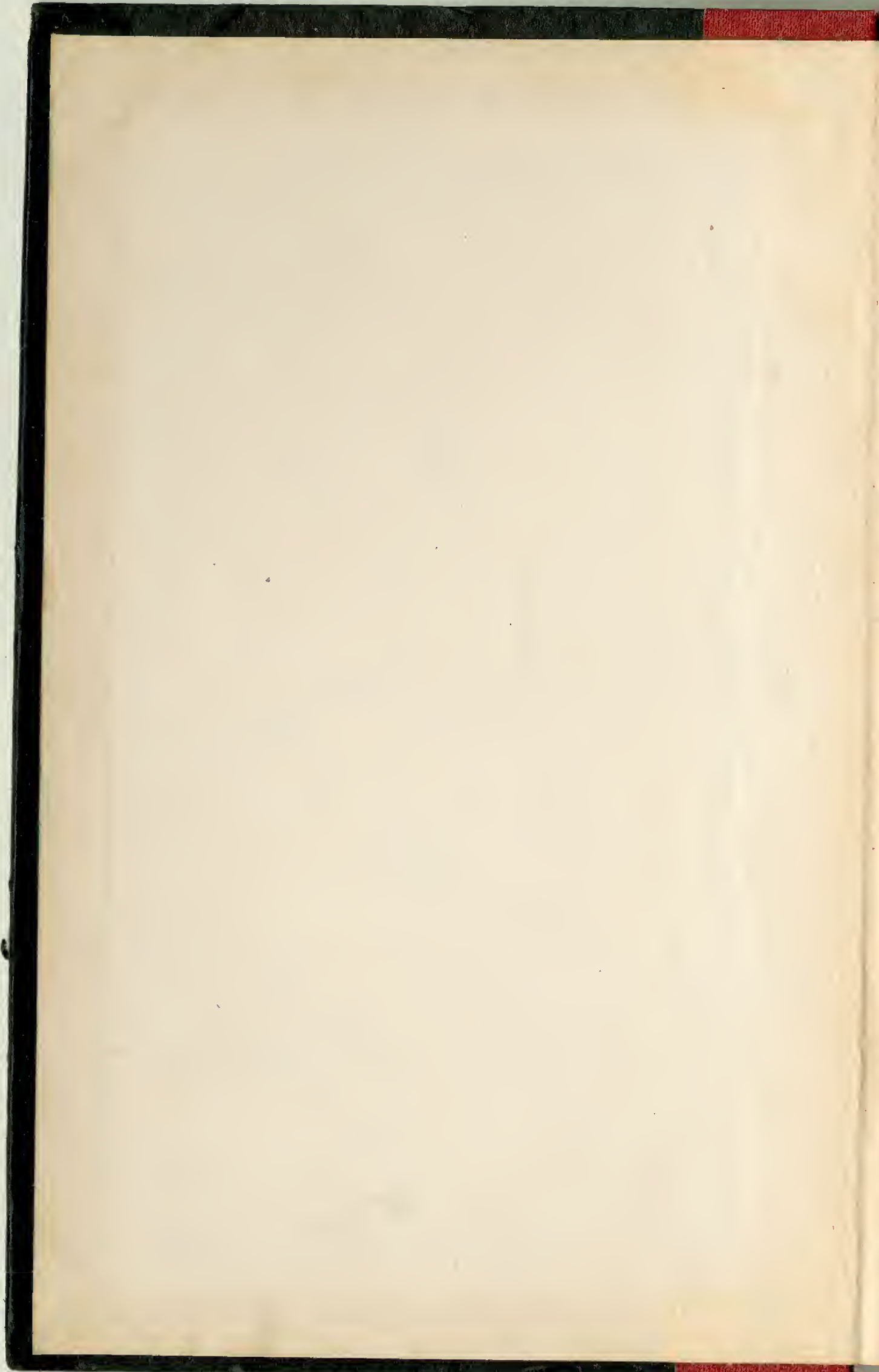


ALBION





LEE O. MILES
COLLECTION

M 5'9 - 49

Army Post
Corkhill Bend

5-26-49

6/1/50

Sponge - dried

~~Handwritten text~~

2nd

Cork - spherul - Alkyd ^{Bin}
Big Cork

~~Handwritten text~~

1.0

EB Feb. 69.

7-7

Allison Estuary (up R. 2 mi.)

Colanosea -

Loxopoda

Myia arenaria - just

Polychaeta - just

Common fish

By PUC boat up stream on incoming tide, but faint, low water.

On mud flats - blue, little sand & ooze.

9⁰⁰ - 10⁰⁰ AM

Collecting in mud

2.0 hrs.

1.0 " prep time

3.0

EB 37-49

7-8-49

7000

10000

Handwritten notes

of Salmon Point

Handwritten notes

Collection 30 hrs.

Found 40

Sp. 20

60

Handwritten notes

W. of Whitehouse Cove

Journal

1857

M 60-49

7-11-49; from 6⁰⁰ am - 9⁰⁰ am

Foggy.

A - Campbell Cove &

S. Jetty. See previous

collection below

Note a heavy frost freeze,

heavy snow & breeze

Silt of rocks & part. clay bed.

Also found shells in sight.

Four rocks under water.

B. of 3 - Old pier, rocks & C.R.

Bluff on beach below from B.C.

Silt on sand

Temp. A - Temp. S.W. 6⁰⁰ am at Cove
on wharf side - 12° C.

At 8⁰⁰ am, 15° C - effect
of outgoing tide?

Collection 3.0 hrs

Special 1.00

Spec

6.0 hrs

Con - 2.00 hrs

1. Crumpled Cove + S. Jetty

Clay - peat - surface

Fithophyta -

Saxifraga

P. ... - small

g 3 In sand - washed - g 3 Octopus

g 3 Mollusca

In sand - island -

Polinices

Cardium

Saxifraga ...

g 3 - Base S. Jetty, inside.

Pecten ... 2 fish

Urosalpinx

Arthropoda

Callinectes ...

Thais ... (small)

Mysid ...

Other chitons ...

Tunicata

Other ...

Zenopsis ...

P. ...

B. Nettle beach

From ...

Ranunculus ...

... ..

E1338

Sat

W. L. Linneman

7-9-49 5:35 - 9:00 a.m.

Shady bench, N end of Dunder
Peak Cove, N.W. side.

Rocks close underneath with
large gravel. Up to 10" sand,
some thin mica.

Screening only

Spec 3

Core 2.8 lbs

Invol 1.0

3.5 "

Spec. 2.5 "

6.0 "

Core 1.00

Hill River
(Vermont State Park)

9/3

Emerita
Shrimp

Worm - long thin

Worm green

9/2

Worm

9/1

Worm - long thin for 1/2 inch
& 1/2 inch

EB 39-49 H. Emerson

7-10-49

Just in following way by front
line of work

Albion Bay

First census taken

Exp. No. 17

7. 17. 40

Ant. 1.00000 in 7.00000
3.00000 1/2 hr.
Ant 100

Temp. 5.00 at 5.30 11.00
SW at 7.00 11.00

Proct. at 2.00 and core,
much Fucus, Egregia
Pinn. Cal. group, other algae
found rocks in water.
Little snow on ground.

Col. 25 hr.
H 1
35
Eye 2
5.15

Cal 100

Pettle River
Van Diemen

7.3

Helictes sp.

" *Wallambii*

Crepidula (L.) *occidentalis* (L.)

Acornus sp.

Asch. ?

Blechn

Polygonum (L.) *sp.*

" - small *leaves*

Worms in mud holes

" " *sp.*, *list* part

Cornu *foliata* ?

Diopatra *sp.*

Enitidion *suberula*

Callinectes

Purpur *metalli*

Rhyssalus (L.) *sp.*

OB 41 Specimens 3.5 hrs
Feb -0.5

7-13-49. 5³⁰ AM - 11³⁰ AM.

Boat 1/2 hr east. Tachina 30 knots

Shelf reef of tilted brown siliceous
limestone & shale. Col 110

Air 12°C SW water 11.0°C Spec. 110.

g³/₄ - Nemertean worms - 2 sp.

g¹

Theris limosa

T. marginata

Mystulus californianus

Fish in isolated tide pools 2-2
caught by hand net.

g³ - On sea column - outer edge reef
various ascidians { *Dactylobolus*
etc

Rocks with { *Worms*
Bryozoa
Hydrants - 3 } g³

Crabs - g²/₄

Loxophanes

Gracil pinnaria

g³ *Pachycheilus rufus* & *pubescens*

" *Hypodogaster cariculus*

g⁴ Coral - *Blasiphyllia elegans*

Point Arena -

In rock, 73 -
Flabellum

Peruvia (Equisetum) 2 species

Phylodonta parva

P. penita

Diplodonta orbella (small, round)

Botula falcata

Hippurina

73 - Isopoda - on algal and other algae

Diadora aqua

+ worm

Acantha mitra

" " with encrustation

Tegula brunnea

Calliostoma costatum

Scaphisoma dura

Paphia staminea

Amphissa veruculata

Diplodonta dura

Crepidula (plan?)

Thais lamellosa

Purpura foliata (after fine. Dyer)

Margarita

Leptostereus

Accumaria. Miniatu, no

EB42

7-14-49. 11:30 am 11:30 am

(Dredge 1/2 hr to 100 ft - 200 ft)

Rocky S. shore where mouth of
river merges with ocean - upper
end of Commanche Bay.

P.W.

Air 13.0° SW, 13.5° C

Specimens 2.0 lbs.

4.0

6.0 "

0.5

0.5

Mouth of Albion R.

9 June

3 *Thais lamellosa* under most rocks, but huge colony under a thin one.

2 *Thais emarginata* on rocks.

3 & 2 *Acanthina*
A. scabra etc

3 *Cyprina* *laucoprodus* under rocks
Petrochelys *cinclips*

2 *Pachypropeus*

Tegulus funeberris

T. brunnescens

Barrach

3 *Isopoda* (5)

Worms

3 With hermit crabs

Urosalpinx

Urosalpinx *frontata*

Epitracium

3 *Cardium* *corbis* - shell only

Nucula *brunnea*

Nemertea *viridis*

EB 43-49

7-14-49 100 P.M. 300 P.M.

MB 75. lunch & Home. dredge
of small River. & haul

Specimens 0.5 hrs. 1-3 feet

0.5 hrs

No haul

Albion Bay -

Alivella pedunculata (Linné)

Alivella biflexata

Nossarina perpinguis

Shrimp - spotted

Alivella biflexata (Linné)

Anthropods

Tarpon

Crab

Worm

Egg cases on eel grass

D. parvicornis

Eel grass with egg cases, etc.

Bank in region South to

EP 44-49

• 7-15-49; 8⁰⁰ am, 9¹⁰ am,
plus 1.0 travel time

Cost 1⁰⁰

2.0 hrs

Temp. Air
at 8⁰⁰ am.

5.0

Rocky point, various algae

Cost 2.0

Temp 1.5

4.5

Cost 1.0

Little River Beach
S. side bay

34 April 7

- Rostkya pulchra (on rock)
- Blechnum
- Clusia
- Juglans
- J. sp.
- Crepitula abnormis or local abnormis
- Scandix
- Callitriche
- Crepitula flava
- Populus sp.
- Andromeda peltata
- Pyrenopeziza

M 61 - 49

1 - 15 - 49 ; 5000, 1730

See ... 1145 + 116

March 4, 9, 49

Print notes - 5000 - 1.3

Call ...

From ...

Page 12

320

...

...

Pier at Inlet Bordego Bay,
W. J. J. Sand bar, Wilson.

Polinices lessonae - abundant

Cardium corbis

Alusella triplicata

Tellina bordegoensis

Jaxea

Solen sp.

Schizothaerus mulleri

Polinices Erythraea - abundant

Theraps

Murex

Fish - 3 sp.

Worms.

Phoronis

Tellina sp.

Actaea

Actaea punctocollis

Hermes

Pr. Madelonah - Navarox

Asteroids

M 62

7. 7/6 - 49

Same as M 61, 12.25.4

Low water 5:30 P.M. - 1.4'

Collected 5:30 - 7:30 P.M.

Small 12

Low 5:30

Spec 2.0

Pais of ... Bay

Polinices lescuri

Cancer productus ♂ & ♀

Cardium corbi

Urosalpinx

... of ...

Clivella

... & ...

Schizothaerus

Exochorda

Pisidia

Phoronopsis viridis

Worms!

Pinnis ...

Demela

Triton ...

Urosalpinx ...

all ...

Worms

Actinostrea

Clymenella rubroancta

Ciriformis luteoviridis

Asaphidion

Pectenaria

P. oviformis

Glycymeris

M 63 - a

Truck #47; 2:00 PM - 5:30 PM

2 Tunnel lines south

Drift #1 2:00 P.M. Off onto E bank North side of

2-3 feet. Cross quite steep

#2 From Big hole E side of hill, down E side

1-3 feet. Cross gentle. Soil red

#3 Straight out direction of channel, from
entrance of hole, past B. 1000 ft. Cross

3-5 feet. 15 min

Call - 3 1/2

and 0.5

4.0

5.0

6.0

Bank - 900 ft - 90

See spec in book

Dredging - Portage Bay (cont.)

- #1 *Alivella petrona* - many
O. belykovi " - adult & juvenile
Dendroica edentata - few small &

- #2 *Pericoma* sp? juvenile
Alivella belykovi & *Alivella*
 Fish - 2 sp. juv. Sole-like
 Nereis
 Shrimp
 Hermit crabs

Small worms - 3 or 4 spec.

Acteon

Coronula corallina juv

Alia pedunculata

- #3 Octopus ^{many}
Alivella 4 species
 Shrimp - several
 Nereis

- Starfish
 Nereis - 2 sp

- Alia 5 or 6 specimens
 Fish

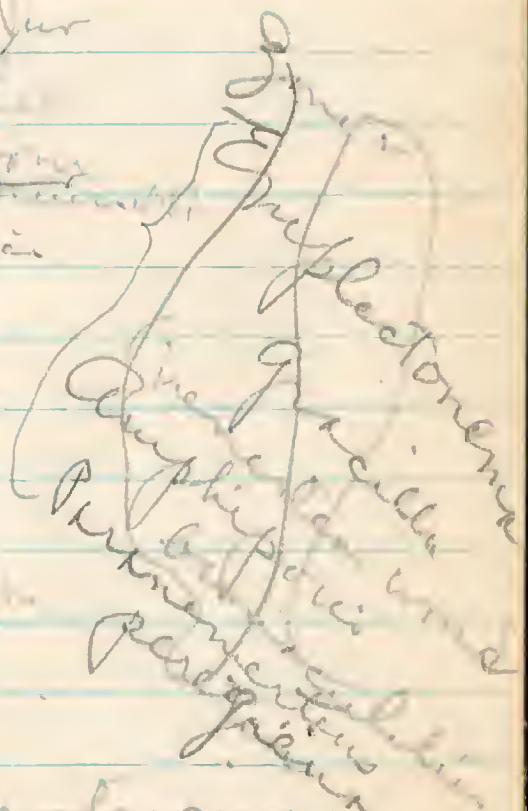
Crab - 3 or 4 spec

Dendroica edentata

Nereis

Hydroids?

Worms - many



M 6.4

9 - 27 - 49

6.0 - 9.0

Front 0.5

Spec. 4 km +

Car 100

200
200

Bohys Laguna
Dutman Baybay Pal. & Ilet.

Paraglobus

Microthraux sulcatus - spec. in group of
P. thraux (part.) near Dutman Bay
in one spec.

Cartesia carbis

~~Cartesia carbis~~

Hemiteuthis sp. (Ch. differences)

Harporhynchus

Large branch, necked

Leptothraux 1 spec. (part. spec.)

Endibonax mullerii - part. spec.

Saniculus thraux (part.)

Shrimp (Callinectes)

Galathea sp. (with no 62)

Libinia

Libinia hystrix

Galathea galathea

Callinectes sp?

Graces - juv.

Podilymbus

M 63 Cont'd (b)

Drift gear

#4 Just right of course from Island
Smith's gull. 3-5 fathoms.
15 minutes. Fine grey sand

#5 Return toward Island on return of
course 4. 3-6 fathoms
15 minutes. Fine grey sand

#6 At Buoy, S & E.
3-5 fathoms

#7 Jelly and toward Buoy, 1 mi
4-5 fathoms

#8 Buoy into Entinua's hole.
500 ft 4-5 fathoms 15 m

#6 Fish
Olivella sp. & veg. Grey sand
moss Sponges
Crab (memulus?) 15 m
Lepid. alba
Dent. sp. etc

M 63 cont'd

#6 Shrews
Worms

Hermit Crab
Small *Leptothorax*
"Worm like" ^{WSE} ?

#5

Alivilla bip. + sp.
Proconium tegula
Shrews
Pellegrone
Cancer sp. Juvenils
Worms

Fresh
Sample

Jugosa (Small type)
Dendroica excavator 1st size
Aliv. on ground

#7

Worms
Alivilla sp.
Dendroica etc.
Proconium perpin (Fall)
Triton with hermit crab
Cancer sp.

Fresh
Wal
Residue
Sample

#8

Worms
Dendroica - all sizes
Cancer - juv.
Alivilla sp.
Proconium perpin (Fall)

Fresh
Worms
Sample

7-28-49

7-28-49; 6³⁰am - 10⁰⁰am
PM 7⁰⁰ - 0.9'

Sand beaches, rather fine,
clean sand; among
boulders.

Boulders, with washing
sand similar to above.

Collecting	3.0	hrs
Prog Spec	2.0	"
Travel	1.0	"
	6.0	"

Cost 1.00

- 3 ✓ *Conus marginatus*
- Dermasteris subricata*
- Nemertea* (worms) f. *Musset*?
- Euplectonema gracile*
- Paramermetes peregrinus*
- Diphysopus berruculatus*
- 2 ✓ *Polysiphonia* *harveyi* f. *Musset*
- 2 ✓ *Hydra* *arguta*

Shuttlecock Gulch -
(near 3rd Carr, Echo Bay)

Q 3
H 4

Sponges - Yellow, ball
Green (small) encrusting
Purple "
Red "
Pink "

Glycals

Tubicolites

Camp locidens

Green, dark, almost black, encrusting

tridubra - 2 sp.

Acropora

Acropora gelida

Acropora

Syngnathus sp.

Labridae

Amphipoda

Pycnogonidae

Polydora

Leptostomatidae

Alveolates

Amphipoda

Chitons

Vermetidae

Porifera

Fittaria

Algae

Q 2

M 66-49

7-29-49; 7⁰⁰am - 10³⁰am
(incubated)

Washed soil from V. ...
then from ... along
channel to number 12
Eg. at water edge (9.2)

Found ... 7³⁹ am - 0.4

Agar ...

one
...

Q. 100

Callinova californica with
... *gambelii* (abundant)
Chaetidium var. *convergens* (common)

Pier at Down Pt (Pales)
To Signal # 12

Nesporocoe adventor (Fors.)
Lithothamnium coralloides (Lamour.)
Sclerapat granulata (Fors.)
Pectinaria sp.
Pinnata - common at Pt.
Lithothamnium
Lithothamnium
Lithothamnium - large many branched
Hermisporia
Clymenella rubrocinerea
Glycymeris
Buccina

"
Cirriformia sp. Plana
Worms

"
Actinoptera
Olivella hystrix
Crepidula
Buccina
Nucula
Nucula fossata (in bygon)
Crepidula nitidula
Pectinaria
Buccina
Buccina sp. (long, marked)

M 67-49

9-28-49

Collection	0.5 hr.
Journal	0.5 "
Spec.	1.0 "
	<hr/>
	2.0 "

From Tide Gauge at
mostly from 14, Berkeley
+1 to -2 feet marks

Mytilus edulis
Brtila sp

Balanus

Hydra

Nereis virens

Hydrobia ulvae
Halosydna brevicornis

Amphipod sp

Crab

Aspidochelone

In float marks, P. Fir -

Linum catharticum

M 68-49

8-3-49

Loaded gear on boat 1:00 - 1:30 P.M.

Traveled to Inlet. 1:45 P.M.

A drag, no bottom, and 5' mud, 1st part
#1 2:00 - 2:10 P.M. From 100 yds E of jetty
cut over. Right way of drag, beyond is
400 yds. On line pier, T water, and N jetty.

#2 From end of 1st pier, Eastern,
well out (to pier) 2:15 P.M. 2:30 P.M.

1st part for today. Poly. rocks? and
#3 Below a large Stenoc. Cr. 2:35 - 2:45

no bottom - too rough & deep. Poly. rocks
#4 From off 3rd pier, below T in line
back to pier, across beach 3:20 3:35 P.M.
Grey sand - very fine.

#5 From line Island & Pier Rock,
toward Right of Inlet. 3:40 3:50
Fine grey sand, minor mud.

#6 From half way between Pier & shore
of jetty, toward Right.
Full load. 4:00 - 4:15 P.M.

#7 Toward right 4:17 - 4:25 P.M.

#8 From Right to opp. Entrance
and bottom - full part.

#9 4:30 - 4:50 P.M. From Channel
to opp. Pier

at 5:00

Drabging from Jamaica

Capt. Lee Norman

#1 Worm tubes & worms

#2	Shrimps	algae
#2	Polydora sp	Massifera
#3	Polydora sp	in gelatin
#4	Shrimps	U. b. sp.
	Caecum just	Pachara sp.
	Alveoli just	
	in bag	#5 - Worm

Nereis mediana

#5	N. polydora	Shrimps
	Polydora sp	Caecum
	in bag	Alveoli just
	Caecum just	in gel.
	Nereis mediana	Small sp
	Mosquito sp.	
	Solenog. just	

#6

Fish
 Murex
 Alveoli
 Caecum just
 Thin tubes & parasites
 Nereis mediana
 Polydora worms
 Forp. sp.

7. Shrimps Worms
 Forp. sp.
 Lepidaster

8.5 M. 69-49

From 2⁰⁰ P.M. leaving, S. 100 ft.
Return 6⁰⁰ P.M.

~~At 100~~ Water 2⁰⁰ P.M. + 3.2

A. *Tridacna* *californica*, in cover
south of *Tridacna* *californica*.
On coral rocks, height 1' diam,
and in cover with little soil.

B. *Cariculus* *californicus*.
On coral rocks, height 1' or 2',
near Swelmer's yacht club.

Cost 1.00

Field time 40 hrs.

Prep. Spec.

40.

10.

Air 53°

S.W. 61°

Tomales Bay -

A - Nest, ¹ Dupler Co.

Aurelia sp. Washed ashore
in quantity

f Litt. scutellata

Amphipod - green

Ligyda occidentalis

Polydora sp.

f r. ~~Thalassidroma~~ sp. (Dum.)

Baldpate

Cerithium sp.

Amphipods

Mytilus edulis

Adamsia limatula

See Anemone

Polydora sp.

Litt. sp.

Weg. americana part

11

Hemigrapsus oregonensis

Dupler virginiana, on a vol of

Boring bryozoa, probably

Penicillaria sp.

7m 70 - 49

8-6-49: 5³⁰ am. - 10⁰⁰ am.

Travel 1/2 hr

Spec 2.0

Car 1.0

Exp. 3³⁰ am. - 1.0

Had to see sand drain before
collected, sand to see by tunnel
come up in channel where could work.

Scum - Shovel.

Old system bet. See M.

Old clay, little sand, large
outcrop in spots.

Spec 2.0 has

13. Lago Fagan
Quinta Oyster Bed

A In algae (white Sargassum)
32 Hermodontolites
Tentaculites
See Appendix 2, floating zone,
not attached, except a single alga.

B In or on sand.
Pectinid
Caprellid
Nereis sp.
Girifurca sp.
Polychaete worms
Nereis sp. oregonensis
Pachygoriscus crassipes
Balanus sp.
Mytilus edulis
M. californianus
Cardium corbis
Spondylus nuttallii
Vermetus stamineus
Trochomorpha nasuta
Schizothaerus nuttallii
Acanthina limatula
Murex edulis
Ostrea virginica
Mollusca?

8-8-49

Free 1.00

P.W. 4:55 am. -0.9'

On outer E. bank S. side
Beyond "break"

See note. M collection

Temp. of 3000 air 53° Fahr
Water 52° Fahr. At same
level 50° Fahr. Temp. 10'

Spec. 20 hr.

Zone 2 - Crab fr. some tubs in sand

Pisostichus *ochroleucus*

93 { *Cancer* *antennarius*
Pilodibates *cinclipes*
P. eriomerus
Crabs - { *Hoplostethus* *corvina* (young)
Pagurus sp.

92 *Alpheidae* *medea*
Washed up on beach -

Polydora *plumicollis*
Zone 1 *Ampelisca* *digitata*
Thalassidroma
Polydora *scutulata*

Jan 11 5, 1875

Jan 3 Barnacles & sp. ^{All on}
Bryozoa (many types)
Bryozoa, a few types
Tubularian shells

Amphipods on old wine corks,
Cubalamin specimens
C. sp.

Clinging fish
Tubularia, encrusted.

Color varieties of *M. l.* ^{Page}
Diodora species

Amphipods on reef.
{ *Endostylia polyzona* Schellin

Parinemertes peregrina
Cat worms (many)

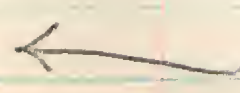
Worm communities *Platysagax*
Hirudo species (few)

Leptochloa *fulvata*
Thalassidroma
Murchisonia californiana *frankii*

Chitons *Mipolia nevadensis*
Dochrochloa mertensii

Apollonia - *Amphipoda venacolor*

Jan 23 *Stenocera* { *digitata*
{ *petta*



See Appendix - *amant*

8-8-49 - 7³⁰ am - 11⁰⁰ am

Out Clift road to "Ellen"
to road cut pits - from
mouth Estab. Area. H. of
"The Cave" - as 3rd pit

Spec 1.0 hrs.

Jan 72 - 49

Bohaga Bay - Proper.

Lepus sp? Some burrows
from Cryptos. floor -
Neris dekullosa with others
Dipodomys filineus to Cryptos
skinning for skins
Pisaster brevispinis
Cancer productus only seen
in magister

Mr 73-49

8-9-59: 5⁰⁰ am to 8⁰⁰ am

Travel - 3 hrs.

Cost 1⁰⁰

A Blue clay, beds for Gyrfalcon

B Sand bar for foot traps

C Gravel & sandstone for Puffin

D Small water in swamps for
Sponges & grasshoppers etc.

E - 4 sites

First miles - 5³⁸ - 0.9 - but in
about 1/2 hr. across here.

Spec. no

Trinidad Bay

S. of S. Bay, Dept. C. Pen.

Zone 2

A. Quipua

2 B. *Fragaria californica*
Worms

Sis Anemone

Shrimp

2 C. *Porphyra staminea*

3 P. sp?

Shrimp ~~not present~~

3 D. *Sardinia* ~~multicell.~~ ~~shrimp~~

Zone 2
Orange Sponges

Yellow "

3 *Nuropelia ciliata*

Ostrea lucida

Sarcolinia dura?

Acanthina spirata

Alrocalpus sp.

Blennius sp?

Sponges or Tunicate

Zone 4
4. *Lygia* sp?

Lygia californica

Hydrotus
Merula

M 9/4

Curry 4/25/49 sat. 3:30. 5:00 P.M.

2 boxes 1/2 lb

Specimens 1 lb.

Car 1⁰⁰

Temp. S.W. 4⁰⁰ P.M. 13.0°C

Box 142, Point Arena
shale reefs.

R.W. 3³⁰ am. 4

A 2/20

Point Arena

Reef pool 9/14

Mostly under loose rocks in water of pool

Regula purpurata many

Acmaea on mud of above. *Acmaea*

Regula brunnea few

Thais emarginata

Margarita 3 sp

Ach. chiton...

Littoridin sp many

Chiton

Acmaea fella (Schult)

A. digitata Ritged, light

A. scabra

Polidora

1 red *Corallina* live, *Chiton* 10 NCL

Small red *San Antonio*

" *Bryozoa* 8 sp

Chiton 3 of 4 species

Margarita

W. sp.

M 75

8/21/29 3³⁰ P.M. - 5⁰⁰ P.M.

Travel 1/2 hr \$1.00 Co

Spec 700 hr.

Spec as MTH 9/100 hr

Further out.

Spec 1, 2 & 3

Pointe au Loup
Reef

Acropora *scabra* g 1
A. digitalis g 14
A. mitis g 3
A. pella g 2
A. ... g 14

Cyathochaeta ~~*nigrescens*~~ g 1
... .. g 1

Bryozoa
... ..
... ..
... ..

... .. g 43
... .. g 1

... ..
... ..
... ..

... .. g 3

Halysites *confusus* g 2!
 One in open on rock.

Podocarpus → g 2

Ms 76 - 59

8/24/76, 5000 - 8300

Level 1/2 hr

Spec 3 hr

Oct 100

Ref on 10/1/76, 7000 - 8000

Low water 3000 - 4000

In Cyne 3.

Point Arena

Reef

Hydrobia ulvae - many

H. ulvae - few

Hydrobia ulvae - plenty

Hydrobia ulvae - many

Hydrobia ulvae - many

Hydrobia ulvae - many

Hydrobia ulvae - many

Hydrobia ulvae - many

Hydrobia ulvae - many

Hydrobia ulvae - many

Hydrobia ulvae - many

Hydrobia ulvae - many

Hydrobia ulvae - many

Hydrobia ulvae - many

Hydrobia ulvae - many

Hydrobia ulvae - many

Hydrobia ulvae - many

Hydrobia ulvae - many

Hydrobia ulvae - many

Cucumaria miniata

C. sp.

Melobesia

Hippasteria

M 97-04

8/23/49; 5⁰⁰ - 7⁰⁰ am
One pound bars at pier.

Journal 1/2 hr

Spec 1/2 hr.

Out \$1.00

See that this is same
station

Bodega Bay

jetty pier sand bar.

2 *Polinices lewisii*

1 *Schizothaerus nuttallii*

Venerupis nuttallii? Juvenile

Cardium corbis - young, broken

Octopus.

M 9/8 - 49
8-24 - 49; 6⁰⁰am. 8³⁰am

On & among rocks 1/2 mi
n. of mouth Salmon Creek.
Much loose fine granite sand.
Rocks up to 20' diam.
Open sex cross, but on
rocks give them in zone 3
much protection.

Sat. 11.5¹⁰ C - 8⁰⁰am
Cloudy.

N. of Salmon Cr
Rocks

g 2 - Coralline on sand from algae
on black galathea

g 2 Brown Coralline

g 3 Red "

Sponges. Red mat.

Brown mat

yellow stalked sponges

Hydroids

Bilgeon on algae

g 3 Red branch

Sm. Red on broad leaf algae

Large yellow, black mat

Herminium?

Large flower, red legs white

g 4 In sand - white, flat (small)

Archeoloides red anemone

Clippa

g In sand - crust

g 7 White rock

Broken boat sponges

on brown algae -

Sargassum, flat.

Orange mass -

Sargassum, in place

Wood on sand g 5 -

Seagull with worms

Gellyfish

M 79-49

9-29-49 11⁴⁵ AM 145 P.M.

Plus 1 hr travel time.

Boat hire 5⁰⁰

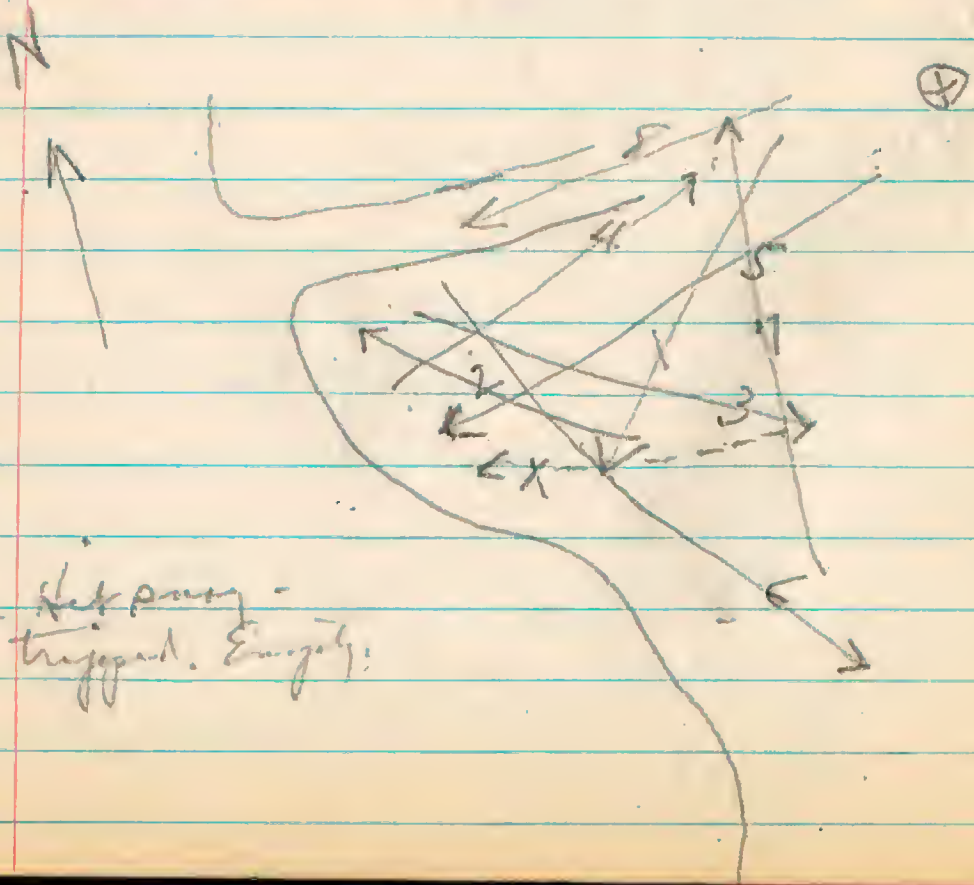
Outer Booby Bay between
jetties. 1 trap - balance
S.W. of S. jetty, between
& Boatyard Road

S.W. 12.0°C at 11⁴⁵ AM

11.0°C at 1³⁰ P.M.

Point like 12.00 M + 3.4'

Clear. Gentle breeze at 11⁰⁰ AM to stiffen
for NW. by 11³⁰ AM.



X - Net party -
tripped. Empty.

dredge

Bokegs Bay
Antarctica

1. From midway between Bury & Jilly, S.W. into light.

Olivell. highlandi

Small dollars, Jew.

O. pedunculata

Flounder

Nossarius 2 sp.

Actaeon punctoculata

Baby clam Cardium corbis

2 Shrimp species

Jew. Cancer

Isopod (like saw bug)

#2. see map.

Same plus 2 Pezomogon

& Small worms.

#3 As above

#4 " "

#5 " "

#6 " " plus Jew. 'Rat Fish'

#7 " " plus Bryozoa on algae. Also 2 P. sinensis

#8 As above.

All bottoms grey sand.

All depths 1 fathom to 3 fathoms.

M 80

10-12-49

After SE storm
reworked my journal

On Salmon Co. beach,

Salmon Co.
Beach

Bryozoa on algae

Hydroids on Kelp

M 81 - 49

10 - 20 - 49

mid. surf.

Low water 4⁰⁰ P.M. + 0.1

with J.C. & P.C.

Muscel Point

M 82.49

10. 21. 49

Free water - 0.6 at 4⁴⁰ P. m.

Point Arena
Reef.

m 83-49

10-22-49

From notes 5³⁶ P.M. - 1.1

Collected for Jerry Williams
mostly 1 r.o. hrs.

Inlet to
Bokeq Lagoon

On sand flats at Port Pier.

2. *Pilinices* γ^3

Cardium corbis

Macoma nasuta

Almella duplicata

~ *Octopus*

Schizothaerus multicolor

Callinectes γ^2

Dendroaster - 2

M 84

11-17-49

On sand beach flat
with 4" sticky plumage on
on top of sand mark

Lat 3⁰⁰ P.M. -0.1

Collected 1 hr.

Bolaga Lagoon
near Meredith's

Agardhiella nuttallii

Acrocyclus leucostylus

A. scabra

A. personata - upper part
of same genus

7m 85

11-18-49

Read 3:50 P.M. - 0.8

On next.

Shuttlesworth Galata

Many { Paterson } & present
{ 2000 }
{ Leaches }

Prototricha strombacea

(Verrucos.)

Acumina pileacea

on *Delphinium*

A. cinerea on *Egretia*

etc

M 86

11-19-49

From 4 35 P. M. - 1.4

Beautiful garden
Springer -

Shell Beach park

Acornus fenestrata
+2

Chiton

Neobornia

Lich

Polydora

Worms in tubes

7th Oct

W

11.20 - 49

Rest 5.20 P.M. - 1.7.

Campbell Beach
~~Widely~~ Cove (North Bay)
Spring

Abalone

A. nutra

arguta

discolor *arguta*

7th 88

11-21-49

~~11-21-49~~

Dredge - off 74 Row

Dredge at 120 fathoms

dark sand & kelp bottom

perhaps not from bottom
Keep on hand.

Red stone (belemnite)

M 89

11-30-49

1. Site 2 30 PM 4/1

Ant

12/2/49

Swamp area

Bonaparte Logans -

In Campbell Cove.

Polenon

~~Bonaparte Logans -~~

Protobacae Stone.

Muscom nasuta

Duzgimolara

Mudibach - Frigida of

Protobacae

Carb. - Corbis

Saxidoma ventralia Stone

White Sea on an. p. 1.

Polenon

Vol 90

9 11-30-49
San Diego

10 11-30-49

Hydrozoa Camp

Hydrozoa in a ~~colony~~ ~~at~~ ~~or~~ ~~the~~ ~~foot~~

Mermaid - Wa. class in
Camp. Ascidian.

Abalone shells.

m. 91 - 49

12 - 3 - 49

L. J. 402 - 0.4

Suburban

Continental Water Control
Randy, Oklahoma

Q. 107, 7/1/49

Sub 11/49

Shell Beach
South of Trestle

Chelonia
E. carolinensis

New species, color below
mud-colored & clear

1292

12/11/19

Purple ...

15 ...

... 58 ...

Numbered plates
File folder.

2m 93-49

12-13-49

Lat. 11⁵⁰ am + 2.0'

Collected at 2³⁰ P.M.

Russian R.

At N. of entrance, near "E" Boh

A. fenestrata - in
of 3 & lower 2, on smooth
plane, fine grained greenstone
on n. side (sketch) & near
or in edge of sand. Most
abundant Acarina this side of

Isopoda - 4, large of 2
near tide pools, not on *Egypia*

7094

12-14-79

dry boat

Stamps E. E. & had an
also dug out our old well
L. only, white, sand.
Rain, & crab.

In 40 fathoms off Triangle
Head
Jefferson

2 juv. rays - many large
ones taken (2' across)

1 Tom cod. Only 1 taken

1 Common Sole

1 English Sole

2 Blow fish - copper,
with bell pattern. Many
taken

Some Pol. taken; also
200 ft crabs in only bag work.
Only 6 sand dabs
& few petrale.

M 95-49

12-16-49

LJ 2:55 P.M. - 0.1

Note like pieces of rocks
just to the NE corner

H.S. Cove -

Weeks II.

Octopus

Principis

Abilone H. rufescens

Deadon

Blasphemy in Gel. tuba

su galapagos

Galina

W-96-49

12-17-49

L.D. 3⁴⁰ P.M. - 1.3'

Rocks & pebbles 1 mi. N.
of mouth Pease R.
Just $\frac{1}{2}$ mi S. of "E" Beach
Some coarse granite & sand.
& greenstone etc.,

Russian R. north.

Amuricus

Prisita?

Octopus

Chiton

Amurea fenestrata
in abundance

A. mitra, large

Crabs (large, shaped small,
Numerous plants)

Clay fish.

Other shells.

Medicinal plants

Mythology

Small quantities

Isopods

Shrimps

Amurea palensis

M. 97-49

12-18-49

P. 3 4.20 P.M. - 1.17'

Shell Beach -
v. sub.

- Red fringed sponges
dark red rust sponges
Comp. Ascidians
- Chitons
- Hydroids
- A. Mitra - large, encrusted.
- Corallines on shore
~~in water~~ - suitable tubes
- Pleurogaster species

m 98-49

12-20-49

Millon Beach

Anchorage & Clam flat

93

of Thais lunellon

Mediobrach - Pseudomastix?

- Murex secta

- " munita

- " (rotata?)

Actinon

Cardium corbi.

Plat.

~~Truncatella~~

"Sea squirt"

- Sponge

Bill & reading on tide flats over
ribbons, shells, etc.

White Crab (in rocks toward Stargate)

M 99-49

12. 2. 2. 109

N.S. Cove - A. C. wide parts

Chitons

B. Beach -

Hydroids

Mylaeus ch. - small

Entolera

100-29

12-9-49

Doran pass -
Sand flat

Crabs -
Pugnuts
Cancer (attain)
" Blood clams

Cardinal

Sungumolaren
on mudflat E of
Pier 4 - Wharf
So many Protolipon
& Callinectes

Fish - N of Pier,
buried to avoid
shiny mud.

No 101 - 50

1-16 + 4/3

Est 4^{top} - 1.5

No 101.5

1-17

Wicks' Cove

→ v Sponges

Hydrozoa

Physalia physalis

Protophaca staminea

Cystes

Physalia physalis

Worms in tube

Physalia

Jelly fish

Physalia

Fish dock -

many parasites on rubber by the

needed for work on site

W 10.0 - 50

1-17
x 1 - 76 - 50

FW 12.0 x 11 1.1

Barren beach

In full tide - stranded
Scales, shells - on sand in tide
Plumose worms - in sand
... ..
... ..

See
103 (Wet beach - sand (disturbed)
Deep, top in tide water)

Alvinia digitata - common
... ..
... ..

See
103 (Barnacles - empty shells
shells not laid,
... ..)

Cockle - small Card. Corbi
Shrimp

Brittle Star - juvenile

Octopus
~~Jelly fish~~

103

1/25

For 11⁰⁰ am 1.6

148 Core.

Eubolus
mytilus 11

m 104

1/25

Jefferson

fish {
perch
small fish

Princeton, N.J.
October 1882

m 103

~~1-28~~ } fur 2-20p. -0.2

Down

Fish

Sanguinolana

Worms

Prey, green mudflat

Shrimp

Jelly Fish

Chitons

1-29

1-29 + 1/2

Air 9°C
W. 11°C

Jeff.

Fish of the
Polynesian Sea
Electricity
In the Fish
String
Carpenter
Fishes
In the
Further notes

Worms in Pol. larvae best shell.
I lack hermit crab, in numbers
Pagurus

70 10'

1-30-50

R₁ 3 15 P. - 0.6

Ar 8^{cc}
- 10^{cc}

1-30-50

107.5

or ^{no} 40.54 ~~friction~~
of Russian R.

Shell Beach

South

Goose barnacles - red.

- Chiton ^{Suber} ^{capita} ^{large}

Pythelone with bores shells
& worms in shell.

- Large Diatoma species
& common sol worm
Tubicolonch

Afternoon

Need (worm tubes)

Worms

five sea whips

m 108

1-21-50

Air 7°C water 9°C

Rur 4⁰⁰ p.m. - 0.9

Shell. Boreas north

Alcyonaria (Siphon?)

Some in old boreas holes in shale.

Shrimps

Worms (hard shells)

Worms in old boreas holes in shale.

Ac. fenestrata

uniquitous

etc

Graptolites rivales

Phol. penita

Hypoonia antiquata

Platystrophia confuciana

} fossil shale z 3.

worms in new boreas holes

Chelons

A. nitra eucaulata

Box 109

2/1/50

Air 8° Water 40° C

7.1 mi fr. Peak trail

Run 4:30 P.M. - 1/1

Shell Beach north

Hydras

Copepods? as usual.

Worms (At. green.) in Calcareous mud.

{ *Phola penita* - rock boring (S. Hill)
{ Worms for " " boring

Chitons

Periwinkle worms (Siphonulid)

Strongy. fasciolaria

of 3 Seals fish colored & curled up like ^{shell} being covered.

Porosoma in Calcareous

Crab (Fuzz)

Red cap. ascid.

A. nuda

A. fenestrata

Callinectes costata

Shell boring (goose)

Shrimps

~~Copepods from Hydras~~

M110

2-1-56

near Park Trails, N.

worked roughly, June 8 & 3

Low. 5⁰⁰p. -1.1

Shell Bed

Large shell, var.

Brittle Star

82

Fuzzy crab

Pagurus in Callionom

Callionoma costata

Thal. lucina

Margarites

Pteropoda (small)

Shrimp

Seg. worms

Didemna aspera - large

4 worms

Neobornia - red, gas sign or red sponge

Octopus - small

Sponge - scudlet

" purple

Halimeda purpuracea

Hydroids

Chiton

Brittle star

Shrimp

Porolithon

M 111

2 - 2 - 50

40 feet to 50 —

off B. ... R.

Jeff:

Small shrimp

Small cut fish

Caligari

Small for 4/0 fishing "in house"

Worms - various

1 jar. Sea urchin

M 112

2-7-50

at 40-50 fathoms of
Salmon Co.

"Jefferson"

Sea mouse

Ichthys

Place of 28th Halibut

Asteriscium?

Perminium?

Medusa aequalis?

~~At first star~~

M113

2-8-50

at 100-115' below
of Gurdala R.

Jefferon

Red fish

Thorny fish, small

~~Dermatocystis~~

Knobby star - Red

mill

v-9-50

at 50 fathoms
to 115 fathoms

~~of Russia~~

Japan

- 50 Skate egg
- 50 Shark egg - *Rochea*
- 115 Heart *cardiformis*
- 100 Dermis *crab* & worms
- Polinices heavy, in ground
- Hydroid
- Polinices - no shells
- 100 Dermis
- 115 Patella
- 110 Krustby star fish

7/15

2-10-50

Chemical Laboratory

Insects, g. & h. g.

Sand, charcoal, glass, sand

Air 10.4°C water 10.0°C

E Beach North

Chitons

Senecio. (Pyracantha?)

Fl. Nymphaea

Juncus

Podocarpus small.

Juncus brunneus

Heliotropium

Becken Nymphaea gigantea (194)

Pycnanthemum
stenense
Lycos

m 116

11-11-50

I have written this

2 24 3, under spots.
Some color of fine sand.

E Beach middle

Chelonia

Isidoria purpurina

H. melleolenta

Calappa

Spongia

Fish { Blenny

Clay

Hyattia

Diastole dawsoni (small)

Suberites with sponge

Big fish

Eel - small

Nudibranch

Crab.

Tr 117

2 - 13 - 50 ♀ 2-14-50
3 - 14

Stewart's Point

Slime Eel

H. rufescens - plenty

H. willakiana

Chiton

Starfish - *Astronotus sertuliferus*

" *Pisaster*? sp.

Orange comp. anemone

Calliostoma - ^{costa} plenty

Murex

White clams for boring holes

Sea gull eggs

Hydroids

Brachiopods

Mytilus

Mytilus (*Mytilus*)

Calliostoma sp.

Theropoda

no. 118

20-50 fuchus } 2/3/50
 } 2/14/50
 } 2/15/50

off Salmon Co to 71 1/2

Jefferson

Polinices - old shells,
some with growth other none.
old with Hermit cr.
some with worm in
shell.

Red shrimp
Octopus
Surf
all fish

Polinices

Bath shark

Note - Acres of shrimp were
observed with thousands of
birds feeding on them.

Leather skin
Pterin?
Pterin

M 119

2/23/50 & 2/24/50
3/14/50

Course between Salmon Co.
& Ft. Ross, at 30-50 feet

Jefferson

Egg case on Pecten shell

Pol. shells & Paganus ^{long}
Spindle " & " wood

San Francisco on Ariflon
instrument panel
shell part "

Shrimp perch?
Octopus

Astragalus

Flower only
spine, long cord

Wood - bones
Bamboo etc

Incubus of Astragalus
Spindle shell of Astragalus
Red Shrimp

M 120

2/25/50

Turning route between
Jones & 3 - north side
of Dixie road, cross to
ground

"E" Beach, So.

Hesperomys

Eutamias

Neotoma

Callosperm

Isopoda

Polidora

Clam, barnacle

Crepidula

M 121

20 25' - 1'0

Attached to summer check

of col.

Courtesy, Lee Moore

off Bird Rock
P. H. Journal

Journal

re

M 122

2-27-56

2-28-56

Note. Diff. in H. reef & soil.

Stewart Point
& north beach

Chitons -

Hal. rufum

H. malleolensis

Hydrobia ulvae

Acanthina kusson

Thais

Small gastropods

M123

3/1 & 3/2

Examination of hard study

Examination in strata.

Sand in boulders in g 2 & 1

Cove & Point between
Hross Saw Mill & Cemetery

Coral ?

Brachiopods

Chelons

Cypris, corals

Holothuria *rupescens*

H. wallisii

Gastropods *small*

7-8-49

#3

Quites

Albion P.

Great, as always. All in bed.

At end of log in grass in
evening meadow near brook.

2:45 P.M. Sunny

#4

Quites

7/8/49

Albion P.

Striped. Little as usual.

Met. Seize.

Some other notes in 1949 & 1950,

done at 3:15 P.M.

#5

Quites

large

7/8/49

Albion P.

Striped

In line on small meadow long shot.

3:20 P.M.

Name #3

1

7-7-49

Brown garden, Albion R

Reeds & sedge

In meadow in swampy area

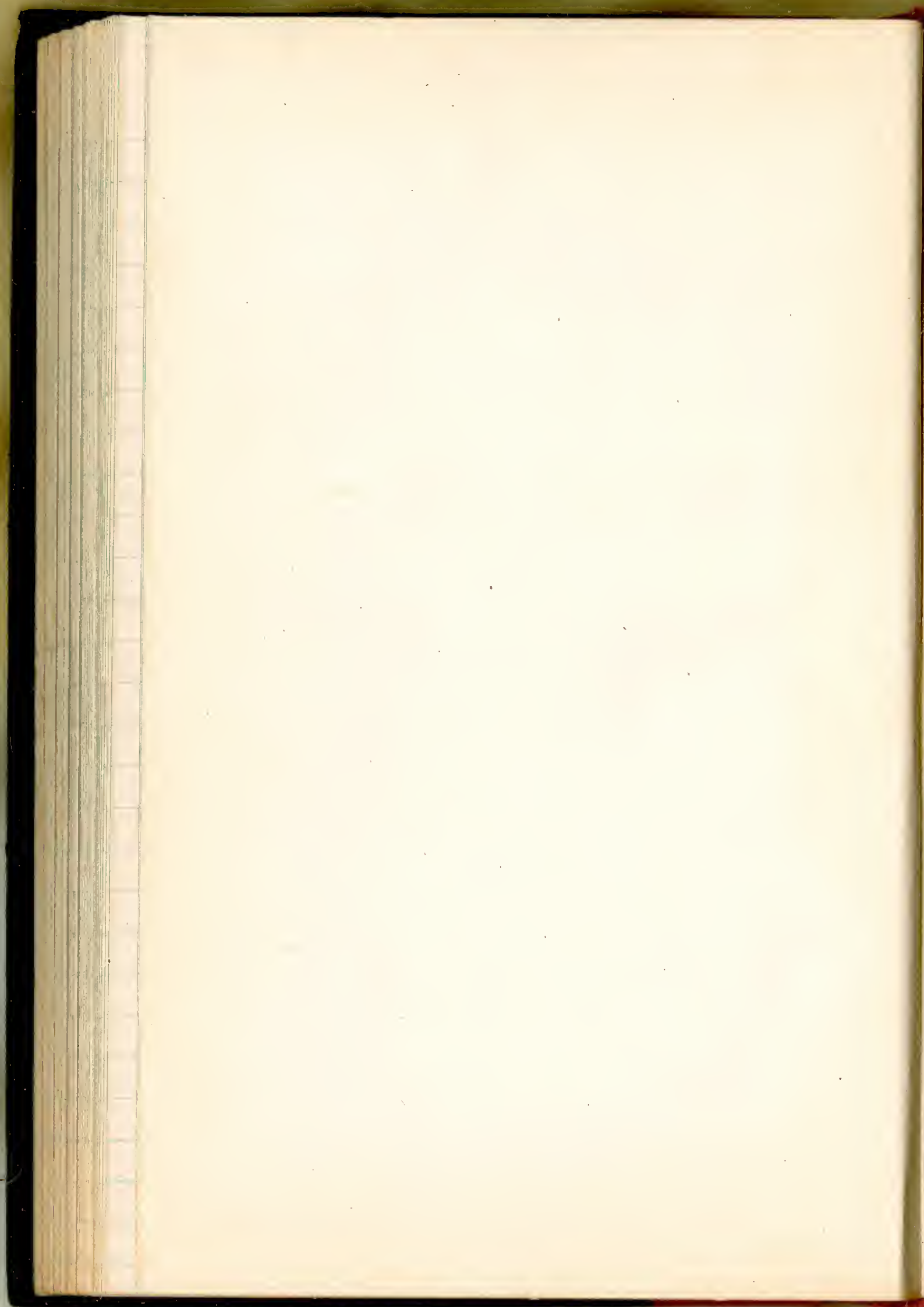
bottom, water level. 745 ft

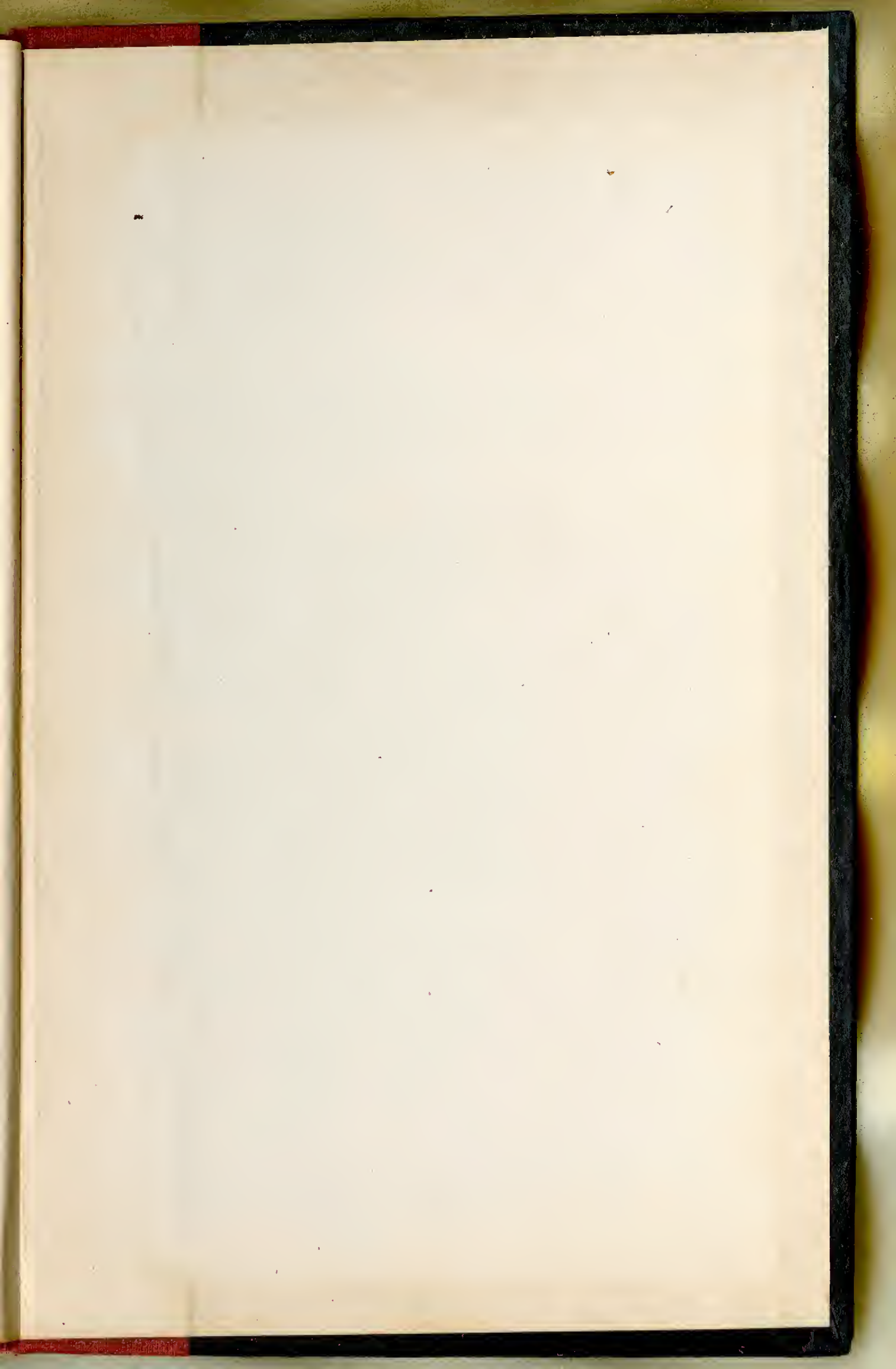
Sunny day

7-7-49

Red garden, Albion R

Same place & time as above







m 90-49

(61)

Hyphant

M 109

"

(62)

M 117

spring starfish

(63)

M 118

Starfish - ordinary at 20

(64)

M 119

" - Purple Astropecten

(65)

M 113-50

(66)

Knobby red starfish

M 112-50

(68)

Red starfish.

M 119

(67)

Feather star

M101
(36) Ret used ^{group} Barnacle

M11
(37) Shrimps for dredge

M101.5
(38) Perch parasite

M101.5
(39) " " - Small.

M123
(40) Coral

M 79

(31) Shrimp for breeding

M 88

(32) White crab

M 118-43

(33) Shrimp (Red ant)

M 96-49

(34) Crab:

M 109

(35) Fungus Crab, flat

M76 - M120

(16) Nudelbranch (Bismarck)

M101
(17) Lemon " Large yellow

M101
(18) Fuzzy " thick coat -

M119
(19) White Sea Anemone
for Jeff.

M101
(20) Anemone for thick coat.

M105
⑪ *Leptocottus armatus* - Sculpin

M107 Hagfish or Shrike eel.

M114
⑫ Sea biscuit

M114
⑬ Hermit Crab - by ^{W. J.} Polunin at
1/28/50 Japan

M121
⑮ Thick lice, and combs by L. M.

M 109-50

(51)

Red siliceous sponge?

M 79-49

(52)

Small flounder? 2"

M 113

(53)

Flat worm

M 114

(54)

Unidentified - full M 50

M 108

(55)

Sessile polyp?

M 97-49

(56)

Hybrid

M 96-49

(57)

Hybrid - large

M 96-49

(58)

Small ..

M 90-49

(59)

"

M 90-49

"

(60)

M 110

2 1/2 x 5 1/2

26

Sponge - matt

M 78

Sponge.

27

M 123

28

Large *Chiton* - *Placiphorella*?

29

Small - "

M 109

30

Shrimp

M 107.5 Baby Sea whelk
(21)

M 117 Small sponge (sponge)
(22)

M 110 Small sponge.
(23)

M 110 Small sponge.
(24)

M 101 Sponges.
(25)

M 114 -

#1 - Large egg (skil)

#2 - Small " (skil)

M 101

3 - sponge.

M 110

4 - Hydroid on kelp

M 98-95'

5 - Invertebrate sponge.

M106 - deep sea Polimnia
spec 6

M117:

spec 7 - mixed

" 8 - 3 color Calliostoma

M 98-95

spec 9 Flriting Ascites

M 97-49

(10) Red Fungus spec

M120
46

Isopoda

M190

47

Mytilus (Ala. - acid)

M110

48

Brattle Star - grey & white bands

M117

49

" " - large, red.

M123

50

" " brown & grey bands, med.

M108

(41)

Sevils polyg?

M185

(42)

Chrysothrix

M122

(43)

Baby shell less common?

M106

(44)

Halobus parasite - long

M102

(45)

Sm. star fish